

GALEON



560 FLY

TAME
THE SEA

The 560 FLY navigates between practicality and internal volume while pushing the boundaries of design and high-end detail finishing.

560 FLY



GALEON

TONY CASTRO
DESIGN & NAVAL ARCHITECTURE



Length of the hull: 16,27m
Length overall: 17,82m
Beam of the hull: 4,82m
Beam overall: 4,82 / 6,82m₁



Min. engine (-s) power: 2 x 541/725 kW/hp
Max. engine (-s) power: 2x 662/900 kW/hp



Fuel tank capacity: 2 x 1100 dm³
Water tank capacity: 700 dm³
Grey water tank: 200 dm³
Black water tank: 220 dm³



Draft max: 1,05m₂
Bridge clearance: 7,15m₂
Height to transport: 8,1m



Mass of Light Craft Condition: 27621kg₂
Maximum Load: 5406kg



Crew limit: 14
Category: B

₁ - with balconies down ₂ - estimated

EXTERIOR

560 FLY

Evolution of design

The 560 FLY bridges the gap in Galeon's portfolio between the award-winning 500 series and the highly innovative 640 and 650 models. The long-awaited premiere is expected to directly address the needs of customers who appreciated the technical prowess of the 500 FLY yet desire more space on board and the bespoke luxury of the 640/650 models while still maintaining a manageable size.

The robust hull is an evolution of the 550 model with a number of significant changes to facilitate all the innovative features that the 4th generation of Galeon yachts have been praised for over the recent years. The yacht was conceived in cooperation with the famous Tony Castro Design Studio to ensure it is capable in the open waters while maintaining a luxury ride for your friends and family.

Precision carbon technology

The 560 sturdy frame is made with vacuum infused fiberglass with carbon reinforcements for better rigidity and weight savings.

The flybridge and hardtop are fully carbon for better stiffness and less top weight for a lower center of gravity. This ensures the yacht is sure-footed even when cruising unsettled sea for a confidence inspiring ride.

Galeon Yachts



Abundance of cockpit space and large glass doors promise a well lit interior.

Upper helm station comes with a passenger sitting area with the wet bar and grill moved back

Two U-shaped rest areas can be combined for a perfect alfresco dining experience.



The large overhang area comes with uninterrupted space for leisure and activities and can be occupied by two free-standing sun loungers.

This flexible approach to space distribution allows for respite during the day and entertaining guests in the evening, notice the LED hardtop illumination.



MAIN DECK FEATURES

560 FLY

A driver's choice

The main deck comes fitted with everyone's favorite Beach Mode that greatly increases the usable cockpit area and helps it to seamlessly blend with the saloon and even serve refreshments to the port and starboard bars. Bow area is divided between the sundeck and a bench with proper backrest which comes in handy if you want to enjoy a thrilling ride up front.

A large hydraulic platform helps with hoisting water toys and allows for easy access to the water and to the crew cabin located aft.

Bespoke interior

Inside, the upscale, fully customizable interior is a mixture of modern design trends and handcrafted luxury fittings with a wide variety of woodwork, fabrics and details. The saloon offers a generously appointed kitchen with the entertainment and dining area moved forward.

The 560 FLY is all about maintaining the fragile balance between practicality and internal volume while pushing the boundaries of design and high-end detail finishing.



Beach Mode

Galeon yachts are renowned for their amazing innovations when it comes to on-board space.

Swiftly extend the cockpit width to 6,82m by dropping port and starboard sides when stationary.

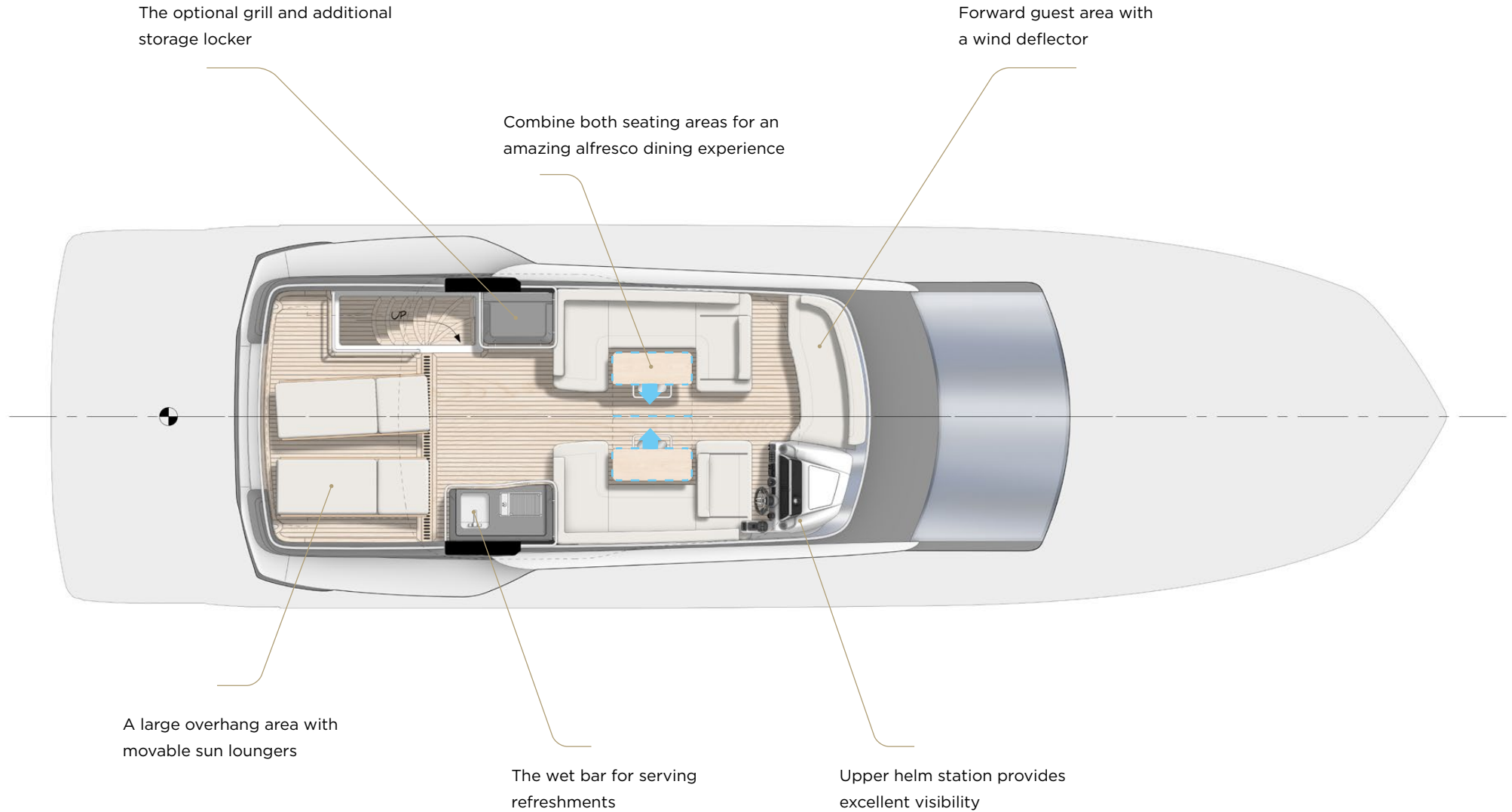


Down below, three cabins and two bathrooms await the passengers for a total of six berths. The owner's quarters are located midship with plenty of space for storage and a private head and shower.

The bow VIP area offers a well-sized double bed, proper closet and an overhead skylight for natural illumination. Starboard guest cabin holds twin beds and is kept bright by hull-side windows.

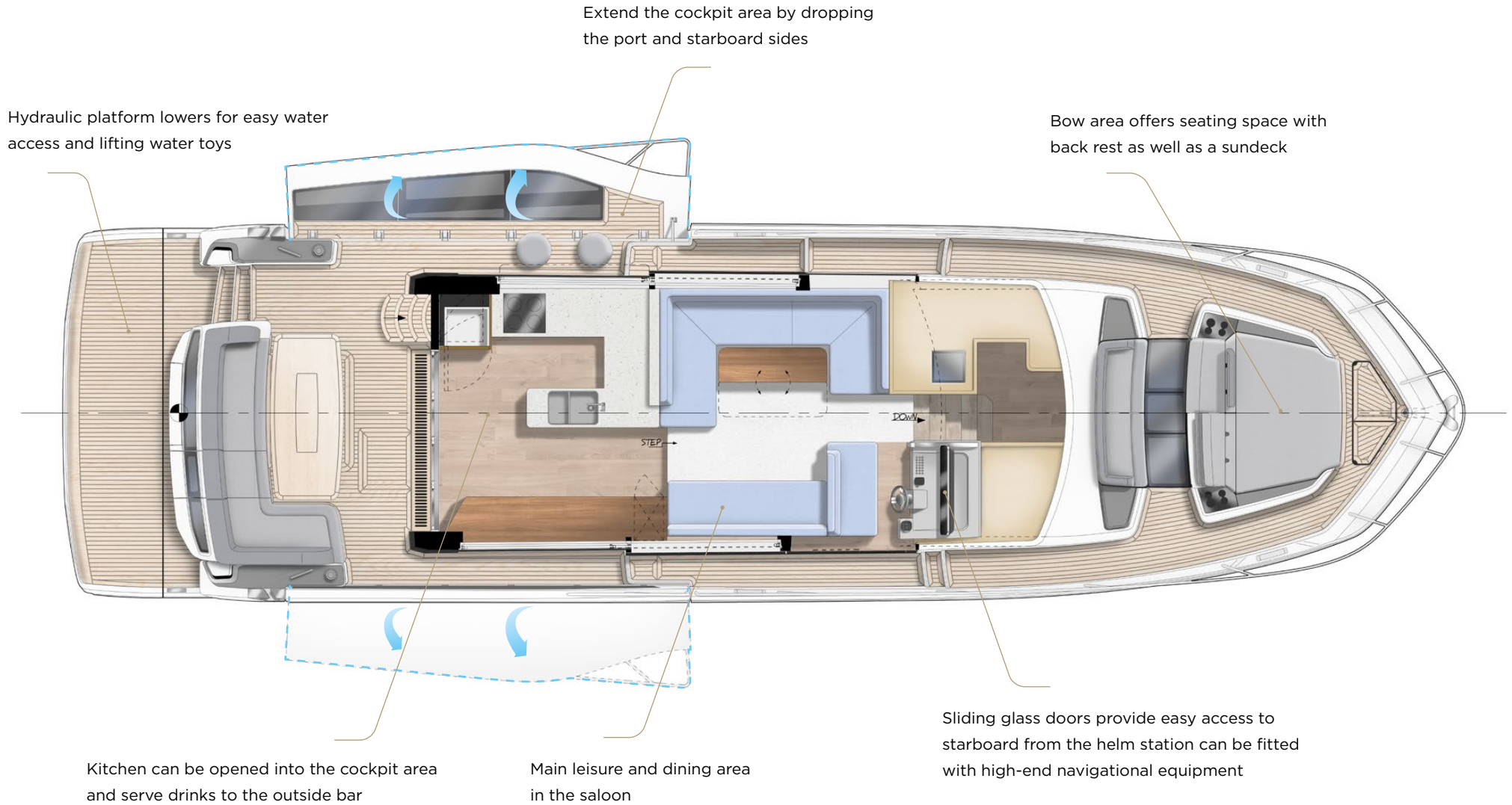
FLYBRIDGE

560 FLY



MAIN DECK

560 FLY



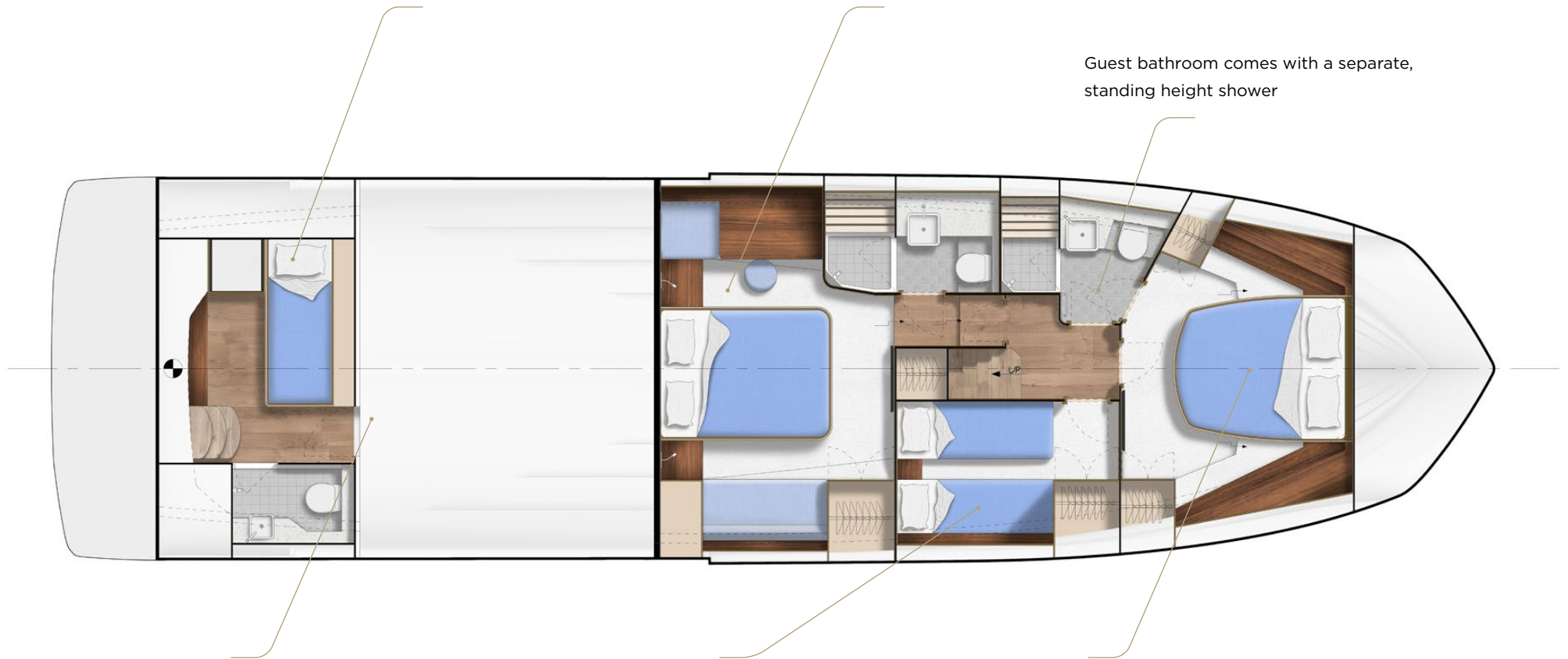
LOWER DECK

560 FLY

Crew cabin comes with a head and can be accessed from the platform

The owner's quarters come with a private bathroom and plenty of storage

Guest bathroom comes with a separate, standing height shower



Easy access to the engine room from the crew cabin

Twin guest cabin is located starboard

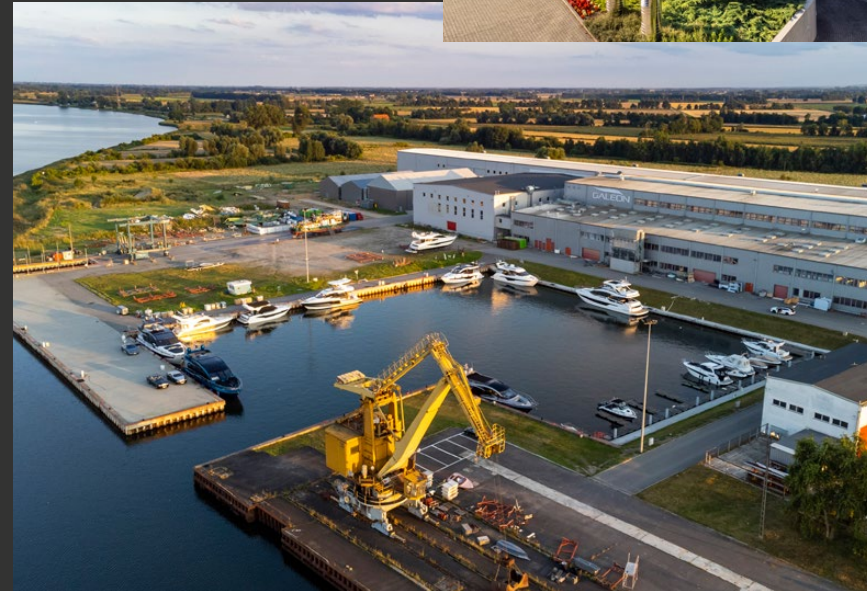
Forward VIP cabin is fitted with a double bed, skylights and additional storage areas

THE GALEON COMPANY

Each Galeon yacht is a unique combination of modern engineering and precise craftsmanship necessary to create an uncompromising emblem of Your success.

With 40 years of experience and constant commitment to innovation and quality, we have seen spectacular growth and an ever-expanding base of satisfied customers around the globe.

Galeon - the future of luxury yachts.



560 FLY

Galeon Yachts
Starogardzka 22
83-010 Straszyn, Poland

galeon@galeon.pl
www.galeon.pl
fb.com/galeon.yachts

